

PRIME DAILY

March 28, 2025



Wall Street ends lower as investors digest Trump's auto tariffs; Indian smaller stocks to remain in demand today.

Stock indexes fell for a second day as markets digested the latest round of tariff announcements. President Trump announced yesterday that he would slap 25% tariffs on automotive imports to the U.S. General Motors, Stellantis and other automakers fell sharply. Stocks of international rivals such as BMW, Toyota and Hyundai that export to the U.S. also came under pressure.

The S&P 500 dropped 0.3%, while the Nasdaq shed 0.5% and the Dow Jones Industrial Average was 0.4% lower. Defensive segments outperformed with consumer staples and health care among the top performing sectors of the S&P 500.

The S&P 500 and Nasdaq are both on course to conclude the first quarter of 2025 in negative territory. So far in 2025, the S&P 500 has lost about 3% and the Nasdaq is down almost 8%.

Auto tariff announcement comes ahead of the highly anticipated reciprocal tariff announcement on April 2nd. Recent commentary has suggested the U.S. administration could take a more lenient approach when applying reciprocal tariffs, perhaps allowing for negotiations, although, the final outcomes remain uncertain.

US GDP growth rate has slowed in the last quarter of 2024, according to the latest economic data. The actual GDP growth rate came in at 2.4%. This figure is slightly higher than the forecasted growth rate of 2.3%, but it is significantly lower than the previous growth rate of 3.1%*.

Gold prices rose to a fresh all-time high on Thursday, bolstered by safe-haven inflows following U.S. President Donald Trump's announcement of new auto tariffs. Bullion prices touched a record high of \$3058 per ounce to mark a gain of over 15% this year.

The Bank of Mexico delivered a unanimous 50-basis-point interest rate cut to 9.00% on Thursday, highlighting progress on inflation but warning of heightened uncertainty relating to trade tensions and a weakening economy.

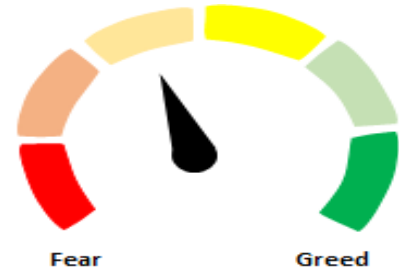
NSE's plan to shift its derivatives expiry day to Monday from Thursday has been put on hold as SEBI has advised exchanges not to tweak the schedule until a new policy kicks in.

SEBI floated a consultation paper proposing that the expiry day could be on Tuesday or Thursday. NSE had earlier proposed to shift its expiry to Monday from Thursday, with the change kicking in from April 4.

Nifty resumed its upward journey gained 105 points to close at 23591 yesterday on the day of monthly derivative expiry, as anticipated, Nifty found support near 23400 and made a strong recovery of over 200 points from the day's low of 23412.

We are initiating the April series with an unprecedented open interest of 1,145 crore shares in the stock futures segment. Foreign Institutional Investors (FIIs) have begun covering their short positions from the March series. 60% of their total outstanding positions remain on the short side, indicating potential for further short covering in the coming days—a development that bodes well for bulls. Furthermore, 80% of F&O stocks have exhibited long build-up or short covering, suggesting a positive bias for the April series.

After experiencing two days of profit booking, the Nifty Midcap and Small Cap Indices have resumed their upward trajectory. While benchmark indices are expected to open with slight softness due to mild selling in larger stocks, we anticipate that mid and small-cap stocks will maintain a positive momentum, driven by robust demand from local institutional investors.



Global Equity Indices				
	Close	Abs. Change		% Change
Indian Indices				
Sensex	77,606	317.9 ▲		0.41%
Nifty	23,592	105.1 ▲		0.45%
Midcap	51,839	193.3 ▲		0.37%
Small cap	16,120	183.1 ▲		1.15%
US Indices				
Dow Jones	42,300	-155.1 ▼		-0.37%
S&P 500	5,693	-18.9 ▼		-0.33%
Nasdaq	17,804	-95.0 ▼		-0.53%
European Indices				
FTSE	8,666	-23.5 ▼		-0.27%
DAX	22,679	-160.3 ▼		-0.70%
CAC	7,990	-40.6 ▼		-0.51%
Asian Indices				
Shanghai	3,355	-13.7 ▼		-0.41%
Hang Seng	23,470	-13.3 ▼		-0.06%
Nikkei	37,012	-1015.6 ▼		-2.67%

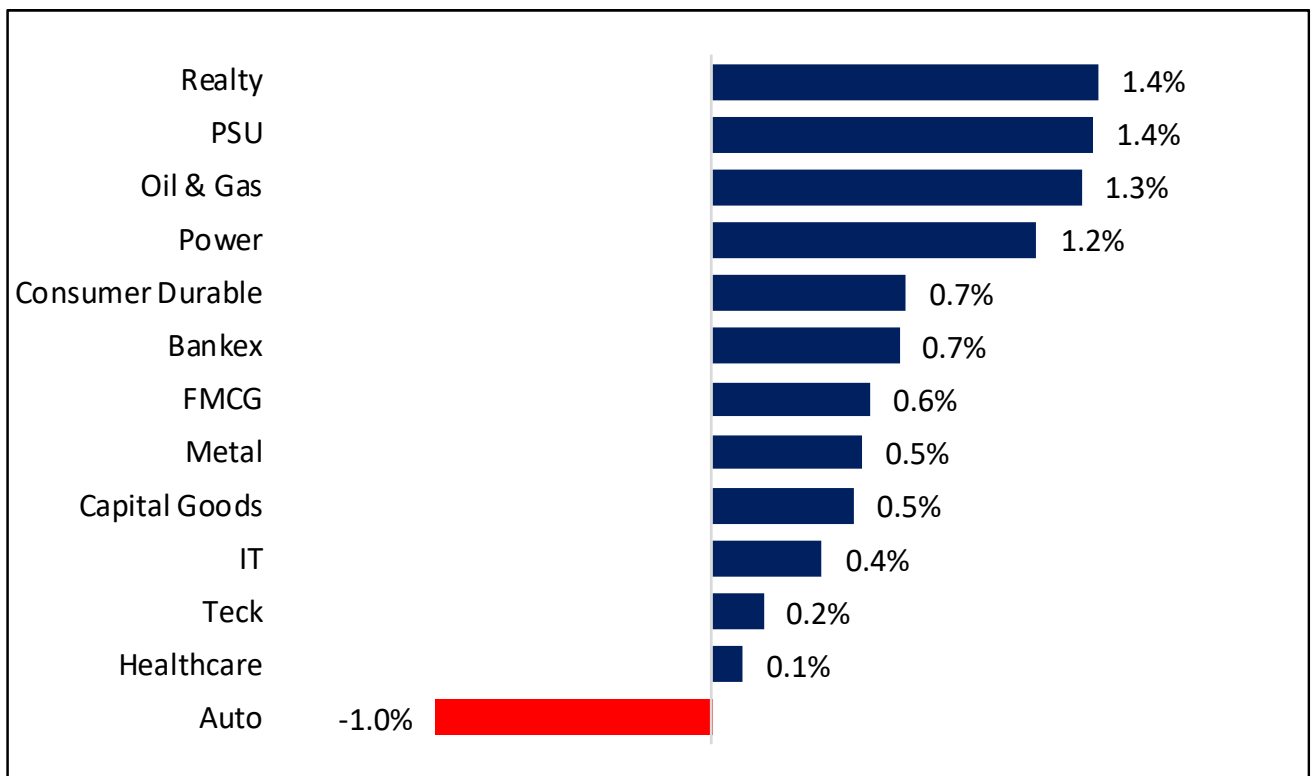
Indices Futures				
	Close	Abs. Change		% Change
IFSC Nifty				
IFSC Nifty	23,752	-19.0 ▼		-0.08%
US Indices				
Dow Jones	42,638	36.0 ▲		0.08%
S&P 500	5,743	3.3 ▲		0.06%
Nasdaq	19,984	-6.8 ▼		-0.03%
European Indices				
FTSE	8,675	2.0 ▲		0.02%
DAX	22,858	-29.0 ▼		-0.13%
Asian Indices				
Shanghai	3,887	-18.8 ▼		-0.48%
Hang Seng	23,522	-96.0 ▼		-0.41%
Nikkei	37,020	-390.0 ▼		-1.04%

Nifty50 Index Contributors

Top Five (Positive Contributors)	
Stock	Points
HDFCBANK	32.3
LT	14.4
BAJFINANCE	8.7
RELIANCE	7.8
BAJAJFINSV	7.6

Bottom Five (Negative Contributors)	
Stock	Points
TATAMOTORS	-18.4
BHARTIARTL	-8.0
SUNPHARMA	-6.5
KOTAKBANK	-5.1
M&M	-1.9

BSE Sectoral Leaders & Laggards

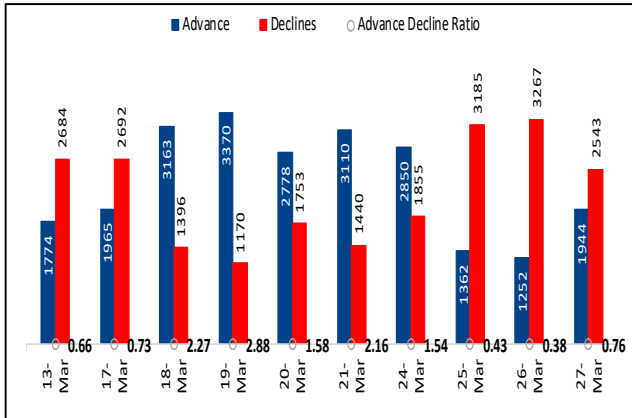


Nifty50 Index Top Pops & Drops

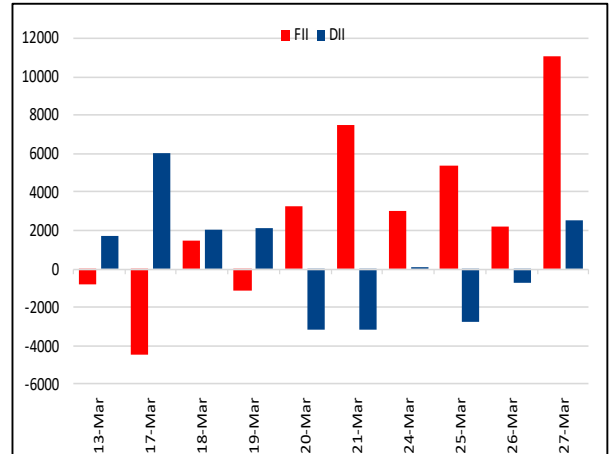
Nifty50 Top Five Gainers			
Symbol	LTP	% Change	Volume
HEROMOTOCO	3,772.1	3.46	1,525,094
BAJAJFINSV	2,005.8	3.21	4,506,778
INDUSINDBK	673.6	2.78	21,589,495
ADANIENT	2,363.4	2.19	1,696,042
HDFCLIFE	681.9	2.02	5,951,034

Nifty50 Top Five Losers			
Symbol	LTP	% Change	Volume
TATAMOTORS	668.6	-5.61	34,238,666
SUNPHARMA	1,731.5	-1.56	3,279,881
EICHERMOT	5,345.8	-1.07	603,145
BHARTIARTL	1,724.7	-0.80	6,222,339
KOTAKBANK	2,128.7	-0.76	9,421,224

BSE Advance & Declines



Institutional Activities



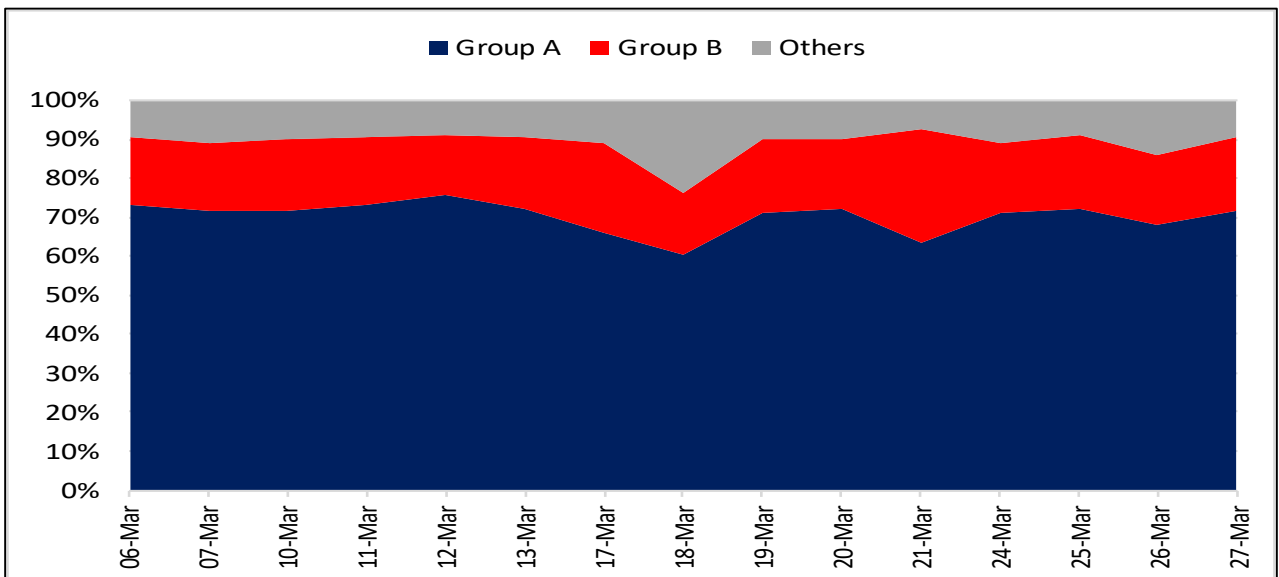
52 Week High Stocks

	27-Mar-25	26-Mar-25
BSE Universe	92	107
BSE Group A Stocks Hitting 52 Week High		
Stocks	Price	52 Week High
SHREECEM	30131.2	30486.7
AAVAS	2090.3	2100.8
CHAMBLFERT	619.8	632.0

52 Week Low Stocks

	27-Mar-25	26-Mar-25
BSE Universe	471	300
BSE Group A Stocks Hitting 52 Week Low		
Stocks	Price	52 Week Low
METROBRAND	1014.5	890.3
JINDWORLD	66.6	54.1
TEAMLEASE	1835.9	1825.0
INDIGOPNTS	943.8	942.0
SONACOMS	467.2	462.0

BSE Cash Market Turnover Participant-wise



News Highly Sensitive to Stock Price

Impact	Stock	News
↑	Asian Paints	The company is establishing a chemical manufacturing facility in Dahej, Gujarat, for Rs 3,250 crore. The facility will handle vinyl acetate ethylene emulsion, vinyl acetate monomer and ethylene.
↑	BSE Ltd	The National Stock Exchange (NSE) has deferred its plan to change the day of expiring of its contracts to Monday after the release of the consultation paper from market regulator Securities and Exchange Board of India (SEBI)
↑	UltraTech Cement	The firm commissioned new capacity and expansion projects across multiple locations. This included a brownfield clinker capacity of 3.35 million tonnes per annum at its Madhya Pradesh plant, a brownfield grinding unit expansion of 1.2 MTPA in Maharashtra and another brownfield grinding unit expansion of 0.60 MTPA in West Bengal. The company also announced a new bulk cement handling terminal in Luc

Stock	News
BEML	BEML Limited has secured a contract from M/s. Bengaluru Metro Rail Corporation Limited (BMRCL) for Design, Manufacture, Supply, Installation, Testing and Commissioning of Standard Gauge Metro Cars and Training of Personnel including Comprehensive Maintenance upto Fifteen (15) Years under Bengaluru Metro Rail Projects. The value of the contract is approximately Rs. 405 Crores
Zen Technologies	Zen Technologies Limited, received an order valued at approximately INR 152 crore (inclusive of taxes) by the Ministry of Defence, Government of India. The order is for the supply of Zen's state-of-the-art Integrated Air Defence Combat Simulator (IADCS) for the L70 Gun, further reinforcing the country's pursuit of technological self-reliance in the defence sector.
HAL	Hindustan Aeronautics Ltd has signed today an amendment to the LCA Mk1 FOC Contract dated 23rd December, 2010. The value of the Contract has been revised from Rs. 5,989.39 Crore to Rs. 6,542.20 Crore, on account of revision in the delivery schedule.
Zensar Technologies	Zensar Technologies announced that it has been selected by Tesco Insurance and Money Services (Tesco IMS), a leading UK insurance company, to drive a comprehensive modernisation and digital transformation agenda. This collaboration will enable Tesco IMS to establish a robust cloud-first ecosystem, scalable operation and create better value and experience for its customers..
HCL Tech	HCL Tech has been selected as a Design Solution Partner (DSP) under the Samsung Advanced Foundry Ecosystem (SAFE™) program. This strategic partnership between HCLTech and Samsung is set to accelerate semiconductor innovation and development, leveraging HCLTech's extensive expertise in Engineering and R&D services.,
Oil and Gas	Saudi Aramco is in talks to invest in two planned refineries in India as the world's top oil exporter looks for a stable outlet for its crude in the world's fastest-growing emerging market.
BEL	Bharat Electronics Limited (BEL) has received additional orders worth Rs 1,385 crore since its last disclosure on March 12, 2025
Ashok Leyland	The Hinduja Group has pledged around 30 crore shares of Ashok Leyland, the group's flagship company in India. The pledge was created through Hinduja Automotive, a UK-based holding company and a key part of the Hinduja Group, which serves as the primary vehicle through which the Hinduja family holds its stake in Ashok Leyland.

Stock	News
Bharat Forge	Bharat Forge inked the largest domestic contract of 184 indigenously developed Artillery Systems with the Ministry of Defense. This accounts to 60% of the Rs 6900 crore procurement by the MOD. The Advanced Towed Artillery Gun System (ATAGS) jointly developed with DRDO is the most advanced 155/52 mm calibre artillery system.
Dixon	To undertake OEM business of lighting products and accessories, Dixon and Signify announced the execution of a binding term sheet for a proposed joint venture in India for carrying on the business as an original equipment manufacturer (OEM) of lighting products and accessories. Each of Dixon and Signify will hold 50% stake in the joint venture entity to be incorporated for this purpose.
Mahindra EPC irrigation	Mahindra EPC Irrigation announced that it has received an order worth Rs 13.12 crore from the Office of the Assistant Engineer for the supply of micro-irrigation systems under a community micro-irrigation project. The project involves the supply of micro-irrigation systems for approximately 2,625 hectares (ha), and it is to be executed within twelve months.
Adani Energy Solutions	Company has executed share purchase agreement with REC Power Development and Consultancy for acquiring 100% equity shares of Mahan Transmission (MTL). MTL will evacuate 1,230 MW of power from Adani Power's upcoming 1,600 MW expansion units at Mahan in Singrauli district and feed into the state grid.
Dilip Buildcon	Company announced that its consortium DBL-STL has received an advance work order (AWO) from Bharat Sanchar Nigam (BSNL) for the BSNL Bharat Net Phase - III Project. The project is valued at Rs 2631.14 crore and has a three-year construction period, followed by a ten-year maintenance contract.
TVS Motors	Company's wholly owned subsidiary, TVS Motor (Singapore) has acquired an additional 30% stake in EBCO from its existing shareholder for a consideration of GBP 60,000.
Jindal Steel & Power	The company was declared as the successful bidder for Saradhapur Jalatap East Coal Block with a revenue sharing of 10%.
Force Motors	The company was declared the L1 vendor for the supply of 2978 Force Gurkha light vehicles to the Indian Defence Forces. The order is for GS 4X4 800 kg Soft Top vehicles.

Stock	News
Punjab & Sind Bank	The bank closed its Qualified Institutions Placement on March 27 and raised Rs 1,219.39 crore by allotting 31.77 crore equity shares to eligible qualified institutional buyers at a price of Rs 38.37 per share.
UCO Bank	The bank closed its Qualified Institutions Placement on March 27 and raised Rs 2,000 crore by allotting 58.36 crore equity shares to eligible qualified institutional buyers at the issue price of Rs 34.27 per share.
Zaggle Prepaisd	The Board has approved the acquisition of a 45.33% stake in Effiasoft from existing shareholders Koushik Shee and Akula Krishna Rao for Rs 36.72 crore. The Board also considered the proposal for the acquisition of an additional 5.67% stake in Effiasoft from Koushik Shee and Akula Krishna Rao for Rs 4.59 crore.
Sandhar Technologies	The company has executed a Share Purchase Agreement with South Korea-based Jinyoung Electro-Mechanics Co. for the sale of its entire stake in the joint venture, Jinyoung Sandhar Mechatronics (JSM). The decision to exit the joint venture aligns with the company's strategic objective of streamlining its business operations and concentrating on its core competencies.
Raymond	The National Company Law Tribunal, Mumbai (NCLT), has approved the Scheme of Arrangement between Raymond and Raymond Realty and their respective shareholders.
CESC	The Uttar Pradesh Electricity Regulatory Commission has approved the Power Purchase Agreement between Dhariwal Infrastructure and Noida Power Company, subsidiaries of CESC, for the supply of power with a contracted capacity of 25 Megawatt for three years, effective April 1.
DCM Shriram	The company has commissioned a 12 TDP integrated compressed biogas plant at its Ajbapur unit, with an investment of Rs 131.30 crore.
Aditya Birla Fashion and Retail	The National Company Law Tribunal (NCLT) has approved the Scheme of Arrangement among Aditya Birla Fashion and Retail, Aditya Birla Lifestyle Brands, and their respective shareholders and creditors

Key Events

US weekly jobless claims edge lower

The number of Americans filing new applications for unemployment benefits slipped last week, while the jobless rate appeared to have held steady in March. Initial claims for state unemployment benefits fell 1,000 to a seasonally adjusted 224,000 for the week ended March 22, the Labor Department said on Thursday. Economists polled by Reuters had forecast 225,000 claims for the latest week.

US pending home sales rebound in February

Contracts to buy U.S. previously owned homes rebounded marginally in February amid a decline in mortgage rates but rising economic uncertainty could limit momentum. The National Association of Realtors (NAR) said on Thursday its Pending Home Sales Index, based on signed contracts, rose 2.0% to 72.0. Economists polled by Reuters had forecast contracts, which become sales after a month or two, rebounding 1.0%. Pending home sales decreased 3.6% from a year earlier.

US corporate profits hit record high before Trump's tariffs

U.S. corporate profits surged to a record high in the fourth quarter amid strong demand and pricing power, but an uncertain economic outlook due to tariffs is creating a challenging environment for businesses that economists say could force companies to lay off workers to protect margins. The report from the Commerce Department on Thursday also showed the economy grew at a slightly more solid clip last quarter than previously estimated, driven by preemptive buying of big-ticket items like motor vehicles ahead of import duties.

U.S. economic growth cools in fourth quarter, final GDP revision shows

U.S. economic growth slowed in the fourth quarter, according to a final revision of government data on Thursday that followed two earlier estimates. Gross domestic product increased at an annualized rate of 2.4% during the period, compared to a rise of 3.1% in the July-September quarter, figures from the Commerce Department's Bureau of Economic Analysis showed.

Brazil posts slightly wider-than-expected February budget deficit

Brazil's central government recorded a slightly wider-than-expected primary budget deficit in February, Treasury data showed on Thursday, although the result improved sharply from a year earlier, mainly due to lower expenditures. Latin America's largest economy posted a deficit, excluding interest payments, of 31.673 billion reais (\$5.52 billion) for the month, while economists polled by Reuters had expected a 30.4 billion reais shortfall.

Nifty : In the process of higher bottom formation at the immediate supports. Further upside from here could pull Nifty towards the hurdle at 23800.



Nifty PSU Banking : In an uptrend continuation pattern after a small dip. Frontline PSU Banking stocks could be in limelight.

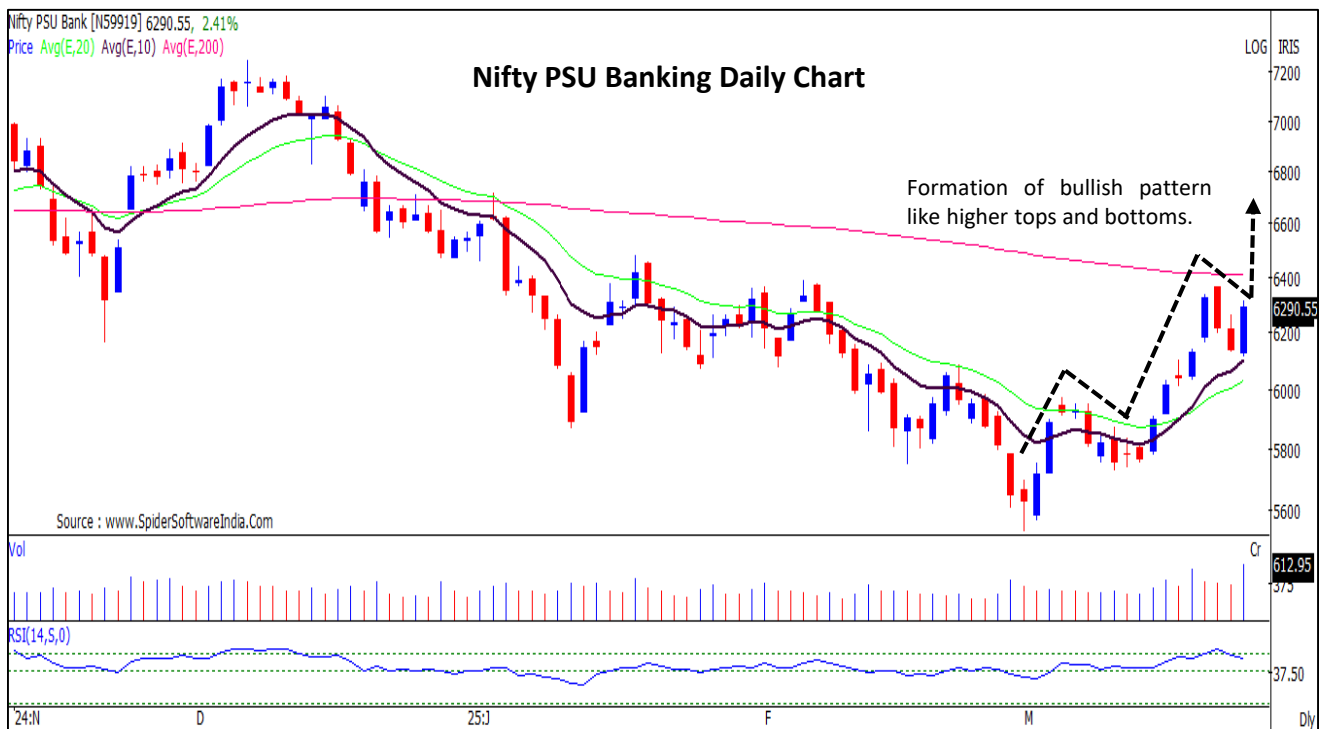


CHART WITH INTERESTING OBSERVATION

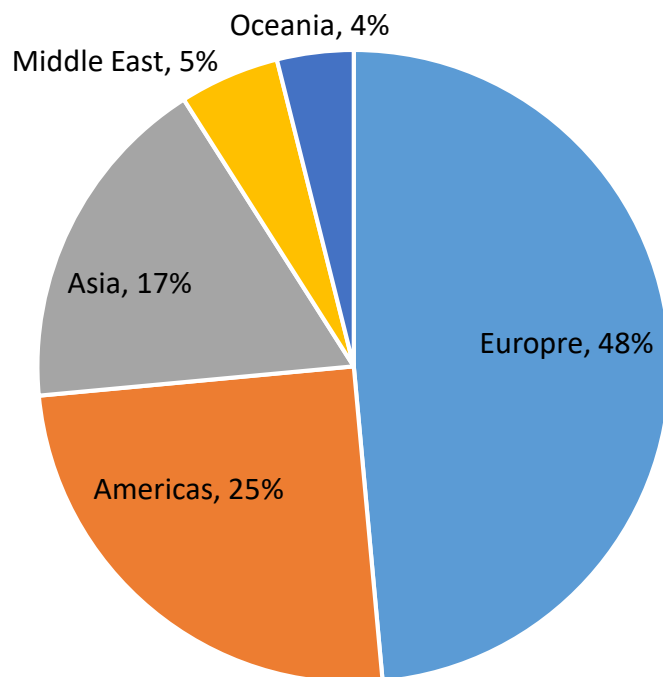
Foreign Ownership of U.S. Stocks by Region

As of December 2024, foreign investors held \$18.45 trillion in U.S. corporate stocks.

- Europe led with \$8.93 trillion (48.4%)
- Americas at \$4.59 trillion (24.9%),
- Asia at \$3.21 trillion (17.4%),
- Middle East at \$0.94 trillion (5.1%),
- Oceania at \$0.73 trillion (3.9%).

Foreign Ownership of US Corporate Stocks

Foreign Ownership of US Corporate Stocks by Region in 2024



Source: Federal Reserve, HSL Prime Research

Economic Calendar

Friday	Monday	Tuesday	Wednesday	Thursday
28 March	31 March	01 April	02 April	03 April
UK: GDP, Current Account EU: Consumer Conf. India: Fiscal Deficit, Eight-core Infra, FX Reserves US: Core PCE	Japan: IIP, Retail Sales, China: Official PMI UK: Mortgage Approvals US: Dallas Fed Mfg. Activity	Japan, China, EU, UK, US: Mfg. PMI EU: CPI, Unemployment Rate US: JOLTs Job Opening, ISM Mfg., Dallas Fed Service Activity	India: Mfg. PMI US: MBA Mortgage, ADP Employment Chg., Factory & Durable Goods Orders	Japan, China, EU, UK, US: Service PMI US: Challengers Job cut, Trade Balance, Initial & Conti. Claims, ISM Services Index

Open Derivatives Trading Calls

NO.	RECO DT.	RECO	COMPANY NAME	ENTRY	CMP	SL	TARGET	UPSIDE %	VALID TILL
1	27-MAR-25	BUY	BANK NIFTY APR FUT	51885-51600	51,965.0	51,500.0	52400	0.8	1-APR-25
2	21-MAR-25	BUY	TATA POWER APR FUT	383.25-371	386.6	365.0	405	4.8	4-APR-25

Open Short-Term MTF Calls

NO.	RECO DT.	RECO	COMPANY NAME	ENTRY	CMP	SL	TARGET	UPSIDE %	VALID TILL
1	20-MAR-25	BUY	HERITAGE FOODS	400.90-392	397.3	384.0	426	7.2	3-APR-25
2	24-MAR-25	BUY	EPL LTD	209.01-203	209.5	199.0	223	6.5	7-APR-25
3	27-MAR-25	BUY	REDINGTON	244.20-236	243.6	232.0	262	7.6	10-APR-25
4	27-MAR-25	BUY	ASIAN PAINTS	2331.30-2295	2,338.1	2,265.0	2430	3.9	17-APR-25
5	27-MAR-25	BUY	PNB	95.74-93.50	96.4	91.5	101.5	5.3	17-APR-25

Open Positional MTF Calls

NO.	RECO DT.	RECO	COMPANY NAME	ENTRY	CMP	SL	TARGET 1	TARGET 2	UPSIDE %	VALID TILL
1	18-MAR-25	BUY	HIKAL*	390.7-369	405.1	390.7	424.0	442.0	9	17-MAY-25
2	18-MAR-25	BUY	ITC HOTELS*	176.90-170	194.6	176.9	190.0	205.0	5	17-MAY-25
3	21-MAR-25	BUY	SJVN	93.51-90	92.4	87.5	100.5	108.0	17	5-MAY-25
4	21-MAR-25	BUY	ITBEES	39.94-39.20	40.4	38.6	41.6	42.9	6	20-MAY-25
5	24-MAR-25	BUY	NELCO	881-838	911.0	812.0	965.0	1050.0	15	23-MAY-25
6	24-MAR-25	BUY	HCG	526.9-494	527.7	481.0	578.0	625.0	18	23-MAY-25

Open Muhurat Trading MTF Picks

NO.	RECO DT.	RECO	COMPANY NAME	ENTRY	CMP	SL	TARGET 1	TARGET 2	UPSIDE %	VALID TILL
1	28-OCT-24	BUY	KARUR VYSYA BANK	214-218	209.2	183.0	249.0	269.0	29	NEXT DIWALI

*= 1st Target Achieved

NSE 200 SUPPORT & RESISTANCE

SYMBOL	CLOSE	R2	R1	PIVOT	S1	S2	5 DMA	20 DMA	% Delivery	Trend
ABB	5540.4	5654.7	5597.5	5521.3	5464.1	5387.9	5493.6	5296.0	52.8	Bullish
ABCAPITAL	185.2	192.1	188.6	183.1	179.6	174.1	183.7	166.7	51.9	Bullish
ABFRL	256.3	262.4	259.4	256.4	253.3	250.3	255.5	245.9	46.7	Bullish
ACC	1964.1	1997.4	1980.7	1951.9	1935.3	1906.5	1935.5	1880.0	43.6	Bullish
AMBUJACEM	542.8	557.2	550.0	538.1	530.9	519.0	525.9	498.1	45.1	Bullish
ADANIPOWER	519.9	543.1	531.5	511.9	500.3	480.8	514.3	506.8	31.3	Bullish
ADANIGREEN	959.9	1005.3	982.6	943.9	921.2	882.5	940.5	870.1	29.4	Bullish
ADANITRANS	872.9	936.9	904.9	850.5	818.5	764.1	828.9	762.8	20.4	Bullish
ADANIENT	2363.4	2425.3	2394.3	2343.0	2312.0	2260.7	2345.6	2255.2	46.9	Bullish
ADANIPORTS	1196.8	1231.6	1214.2	1194.6	1177.2	1157.6	1190.1	1138.8	45.2	Bullish
ASHOKLEY	208.5	219.1	213.8	209.5	204.2	199.9	211.4	207.8	31.4	Bullish
ALKEM	4960.2	5054.1	5007.1	4956.1	4909.1	4858.1	5005.6	4796.8	55.4	Bullish
APOLLOHOSP	6492.1	6623.8	6557.9	6494.1	6428.2	6364.4	6576.8	6301.2	70.2	Bullish
ASIANPAINT	2338.1	2385.8	2362.0	2326.2	2302.4	2266.6	2323.0	2255.9	62.5	Bullish
APOLLTYRE	428.0	438.6	433.3	426.7	421.4	414.7	429.7	408.2	44.8	Bullish
AUROPHARMA	1164.3	1194.3	1179.3	1155.6	1140.5	1116.8	1185.3	1122.9	38.6	Bullish
ASTRAL	1294.6	1321.7	1308.1	1288.0	1274.5	1254.4	1293.8	1296.9	51.9	Bearish
ATGL	611.9	629.8	620.9	608.2	599.3	586.6	614.7	598.3	64.3	Bullish
AUBANK	554.4	587.0	570.7	557.5	541.2	527.9	555.8	538.5	56.3	Bullish
AWL	256.0	263.8	259.9	254.1	250.2	244.4	258.7	252.7	51.4	Bullish
AXISBANK	1098.4	1118.1	1108.2	1098.2	1088.3	1078.3	1096.2	1043.9	65.8	Bullish
BAJFINANCE	9003.9	9193.7	9098.8	8960.5	8865.6	8727.4	8988.7	8638.4	65.2	Bullish
BANDHANBNK	148.0	151.3	149.6	147.8	146.2	144.4	147.3	144.0	48.2	Bullish
BATAINDIA	1202.1	1228.6	1215.3	1207.7	1194.4	1186.7	1225.0	1232.7	58.3	Bearish
BHARTIARTL	1724.7	1761.3	1743.0	1728.1	1709.8	1695.0	1727.7	1654.2	68.4	Bullish
BEL	300.7	305.1	302.9	299.8	297.5	294.4	299.6	280.1	54.7	Bullish
BHEL	214.0	221.4	217.7	213.2	209.5	205.1	213.5	199.4	62.4	Bullish
BHARATFORG	1159.2	1231.8	1195.5	1162.7	1126.3	1093.5	1182.2	1101.0	43.3	Bullish
BALKRISIND	2550.3	2641.6	2595.9	2537.2	2491.6	2432.9	2583.4	2568.5	49.5	Bearish
BIOCON	345.6	353.9	349.7	346.1	342.0	338.4	347.1	330.9	34.9	Bullish
BAJAJ-AUTO	7974.3	8142.1	8058.2	7955.2	7871.3	7768.4	8030.2	7721.8	62.9	Bullish
BAJAJFINSV	2005.8	2062.2	2034.0	1983.3	1955.1	1904.4	1927.1	1861.9	60.5	Bullish
BAJAJHLDNG	12462.6	12926.6	12694.6	12449.0	12216.9	11971.3	12458.4	11802.2	50.6	Bullish
BANKBARODA	231.0	240.3	235.7	227.3	222.7	214.3	223.1	209.2	52.2	Bullish
BANKINDIA	107.8	111.4	109.6	106.8	105.0	102.3	106.5	99.3	46.0	Bullish
ABBOTINDIA	30569.2	31136.1	30852.6	30526.5	30243.0	29916.9	30725.4	30543.2	46.6	Bullish
BOSCHLTD	28355.5	28998.4	28676.9	28138.5	27817.0	27278.6	27916.9	27145.9	58.8	Bullish
BPCL	276.1	283.7	279.9	276.0	272.2	268.4	277.7	262.9	80.2	Bullish
BERGEPAIN	501.8	509.3	505.5	501.3	497.5	493.3	503.2	498.2	41.7	Bullish
BRITANNIA	4841.2	4994.2	4917.7	4848.9	4772.4	4703.5	4829.4	4743.6	79.4	Bullish
CANBK	89.7	92.0	90.8	88.8	87.6	85.6	88.8	84.8	54.9	Bullish
CONCOR	700.5	719.6	710.0	696.4	686.8	673.2	700.9	663.6	50.8	Bullish
CGPOWER	637.2	651.2	644.2	635.7	628.7	620.2	634.8	618.2	74.6	Bullish
CHOLAFIN	1531.7	1553.8	1542.7	1525.0	1513.9	1496.2	1530.2	1473.2	62.2	Bullish
CIPLA	1482.9	1504.7	1493.8	1478.1	1467.2	1451.5	1503.6	1467.7	60.8	Bullish
COLPAL	2394.3	2439.4	2416.9	2386.4	2363.9	2333.4	2398.6	2425.2	56.5	Bearish
COALINDIA	396.9	403.8	400.3	396.2	392.7	388.6	400.3	383.5	58.2	Bullish
COFORGE	8107.6	8299.2	8203.4	8069.2	7973.4	7839.2	7921.9	7604.8	41.7	Bullish
COROMANDEL	1970.5	2055.8	2013.1	1979.8	1937.1	1903.8	1978.3	1827.3	39.6	Bullish
CROMPTON	354.8	365.3	360.0	355.0	349.8	344.8	359.7	347.7	48.5	Bullish

NSE 200 SUPPORT & RESISTANCE

SYMBOL	CLOSE	R2	R1	PIVOT	S1	S2	5 DMA	20 DMA	% Delivery	Trend
DABUR	512.9	521.7	517.3	510.6	506.2	499.5	509.0	498.8	64.9	Bullish
DALBHARAT	1813.6	1871.0	1842.3	1792.7	1764.0	1714.4	1762.4	1708.5	54.4	Bullish
DELHIVERY	252.9	259.1	256.0	252.9	249.8	246.8	257.7	253.0	63.9	Bearish
DEVYANI	149.9	153.0	151.4	149.1	147.5	145.2	149.1	158.2	68.1	Bearish
DIVISLAB	5872.7	5997.8	5935.2	5831.2	5768.7	5664.7	5852.1	5675.5	61.4	Bullish
DIXON	13510.8	14002.2	13756.5	13428.3	13182.6	12854.3	13812.2	13745.5	39.0	Bearish
DLF	688.5	704.9	696.7	684.4	676.2	663.8	693.2	669.9	44.6	Bullish
LALPATHLAB	2488.0	2629.7	2558.8	2484.4	2413.6	2339.2	2492.6	2482.1	57.8	Bullish
DMART	4065.0	4180.0	4122.5	4027.5	3970.0	3874.9	3961.4	3714.2	61.2	Bullish
DEEPAKNTR	1991.2	2053.3	2022.2	2001.2	1970.1	1949.0	2038.8	1968.0	39.5	Bullish
DRREDDY	1162.2	1187.9	1175.1	1159.5	1146.7	1131.1	1183.0	1146.0	70.6	Bullish
EICHERMOT	5345.8	5455.3	5400.5	5350.3	5295.5	5245.3	5382.1	5102.1	55.2	Bullish
ESCORTS	3254.2	3330.0	3292.1	3246.1	3208.2	3162.1	3240.4	3052.6	38.3	Bullish
FEDERALBNK	197.6	204.8	201.2	196.4	192.8	187.9	193.6	183.4	58.6	Bullish
FLUOROCHEM	4005.8	4101.2	4053.5	3990.3	3942.5	3879.3	3977.9	3809.8	45.6	Bullish
FORTIS	671.8	707.4	689.6	660.1	642.3	612.9	649.3	630.1	57.6	Bullish
GAIL	181.6	188.7	185.1	178.7	175.1	168.6	177.9	163.7	51.6	Bullish
GODREJCP	1144.6	1171.2	1157.9	1136.7	1123.4	1102.3	1124.6	1060.0	77.0	Bullish
GLAND	1604.9	1655.5	1630.2	1607.6	1582.3	1559.7	1611.5	1592.3	52.7	Bullish
GODREJPROP	2126.2	2164.0	2145.1	2123.1	2104.2	2082.1	2145.7	2049.3	55.5	Bullish
GRASIM	2618.7	2661.5	2640.1	2607.6	2586.2	2553.6	2550.5	2433.9	54.0	Bullish
GUJGASLTD	410.4	422.5	416.5	407.9	401.9	393.3	411.0	390.6	45.6	Bullish
HAVELLS	1515.4	1556.8	1536.1	1507.8	1487.1	1458.8	1489.9	1471.5	55.2	Bullish
HCLTECH	1630.2	1661.0	1645.6	1629.6	1614.1	1598.1	1611.9	1574.5	68.4	Bullish
HDFCAMC	4073.3	4172.4	4122.9	4089.3	4039.7	4006.1	4070.4	3857.9	69.6	Bullish
HDFCBANK	1825.4	1864.4	1844.9	1821.5	1802.0	1778.6	1804.7	1734.3	70.9	Bullish
HDFCLIFE	681.9	695.4	688.7	677.9	671.1	660.3	676.6	641.8	65.2	Bullish
HEROMOTOCO	3772.1	3902.5	3837.3	3723.8	3658.6	3545.2	3660.3	3617.1	49.7	Bullish
HAL	4161.0	4251.9	4206.4	4163.6	4118.1	4075.3	4064.6	3585.7	37.6	Bullish
HINDALCO	693.4	702.2	697.8	693.5	689.1	684.8	695.0	679.3	64.1	Bullish
HINDPETRO	359.6	372.4	366.0	357.6	351.1	342.7	358.4	331.2	48.8	Bullish
HINDUNILVR	2244.7	2296.1	2270.4	2235.2	2209.5	2174.3	2252.9	2213.8	79.3	Bullish
HONAUT	33814.5	34636.2	34225.3	33788.2	33377.3	32940.2	33473.1	34017.4	45.6	Bearish
HINDZINC	447.9	455.8	451.8	446.0	442.0	436.2	446.9	429.0	55.5	Bullish
ICICIBANK	1336.7	1358.8	1347.7	1340.4	1329.4	1322.1	1343.5	1268.8	64.6	Bullish
ICICIGI	1794.3	1821.0	1807.6	1784.6	1771.3	1748.3	1770.9	1716.0	61.0	Bullish
IDEA	6.9	7.1	7.0	7.0	6.8	6.8	7.2	7.3	53.5	Bearish
IDFCFIRSTB	56.9	58.1	57.5	56.8	56.2	55.5	57.1	56.5	59.7	Bullish
IGL	195.5	202.1	198.8	196.1	192.8	190.2	198.3	190.6	34.3	Bullish
INDHOTEL	790.6	828.1	809.3	797.7	778.9	767.3	818.8	769.2	74.0	Bullish
INDUSINDBK	673.6	699.9	686.7	663.6	650.5	627.4	664.5	793.0	50.3	Bearish
INDIANB	552.9	570.5	561.7	549.2	540.4	527.8	546.9	521.3	49.0	Bullish
INDIGO	5127.8	5257.9	5192.9	5083.9	5018.9	4909.9	5034.8	4782.0	52.7	Bullish
INDUSTOWER	338.4	344.9	341.7	338.3	335.1	331.7	343.1	334.8	54.5	Bullish
INFY	1603.6	1637.1	1620.3	1603.2	1586.4	1569.2	1603.4	1645.7	61.5	Bearish
NAUKRI	7214.6	7434.1	7324.4	7140.2	7030.5	6846.3	7084.3	6849.5	60.4	Bullish
IOC	130.4	132.4	131.4	129.9	128.9	127.5	131.1	124.7	53.5	Bullish
IPCALAB	1470.1	1549.1	1509.6	1454.4	1414.9	1359.8	1442.0	1367.7	45.0	Bullish
ICICIPRULI	591.4	602.8	597.1	588.8	583.1	574.7	590.1	561.4	75.6	Bullish
IRCTC	718.1	737.9	728.0	714.9	705.0	692.0	717.8	700.0	70.7	Bullish

NSE 200 SUPPORT & RESISTANCE

SYMBOL	CLOSE	R2	R1	PIVOT	S1	S2	5 DMA	20 DMA	% Delivery	Trend
IRFC	124.3	131.2	127.8	125.7	122.3	120.2	128.9	121.9	43.5	Bullish
ITC	409.5	413.7	411.6	408.6	406.5	403.6	408.6	405.3	71.3	Bullish
JINDALSTEL	916.1	935.2	925.6	909.4	899.8	883.6	912.4	899.6	44.9	Bullish
JSWSTEEL	1059.8	1078.6	1069.2	1059.6	1050.2	1040.6	1059.6	1017.5	63.2	Bullish
JSWENERGY	548.4	560.2	554.3	548.8	542.9	537.5	558.3	521.4	63.9	Bullish
JUBLFOOD	674.6	690.8	682.7	669.9	661.8	648.9	658.2	629.5	67.8	Bullish
CUMMINSIND	3004.4	3091.6	3048.0	3012.4	2968.8	2933.2	2993.2	2906.8	51.3	Bullish
KOTAKBANK	2128.7	2170.2	2149.4	2130.6	2109.9	2091.1	2139.7	2003.5	73.6	Bullish
LAURUSLABS	617.7	629.9	623.8	614.9	608.8	599.9	616.4	580.7	45.3	Bullish
LICHSGFIN	569.5	580.8	575.2	566.3	560.7	551.8	570.3	535.8	55.9	Bullish
LICI	801.2	821.6	811.4	795.7	785.5	769.8	793.9	762.8	49.3	Bullish
LUPIN	2018.8	2082.5	2050.7	2022.1	1990.3	1961.7	2076.2	2011.8	63.7	Bullish
LT	3501.6	3570.5	3536.1	3493.5	3459.1	3416.5	3462.8	3285.5	62.0	Bullish
LTF	155.6	160.3	157.9	154.6	152.2	148.9	155.4	144.5	39.4	Bullish
LTIM	4655.9	4750.9	4703.4	4631.5	4584.0	4512.0	4604.5	4613.8	63.8	Bearish
LTTS	4447.8	4625.8	4536.8	4478.9	4389.9	4332.0	4568.0	4600.4	56.1	Bearish
MANKIND	2452.2	2559.3	2505.7	2439.1	2385.5	2318.9	2408.2	2283.9	65.9	Bullish
MFSL	1147.3	1172.5	1159.9	1139.0	1126.4	1105.4	1140.2	1068.6	32.3	Bullish
MAXHEALTH	1129.4	1155.1	1142.2	1126.5	1113.6	1097.9	1148.2	1043.3	69.4	Bullish
M&M	2733.0	2782.0	2757.5	2726.5	2702.0	2671.1	2757.6	2714.0	63.0	Bullish
M&MFIN	290.1	297.5	293.8	288.3	284.6	279.2	290.2	279.2	50.2	Bullish
MOTHERSON	131.9	138.0	135.0	129.8	126.8	121.7	132.7	126.2	19.4	Bullish
MPHASIS	2528.2	2570.1	2549.1	2518.6	2497.6	2467.1	2498.1	2331.9	56.1	Bullish
MARICO	649.1	661.2	655.1	645.4	639.3	629.6	635.5	614.3	44.3	Bullish
MRF	113264.0	115058.0	114161.0	113303.0	112406.0	111548.0	113584.1	108371.1	39.6	Bullish
MARUTI	11722.0	12012.7	11867.3	11752.7	11607.3	11492.7	11796.0	11732.4	64.3	Bearish
MSUMI	53.0	54.8	53.9	53.1	52.2	51.4	54.3	51.5	60.3	Bullish
MUTHOOT FIN	2337.9	2390.5	2364.2	2331.6	2305.3	2272.7	2341.2	2250.1	65.6	Bullish
NESTLEIND	2242.1	2287.9	2265.0	2245.1	2222.2	2202.4	2254.6	2218.9	58.3	Bullish
NAVINFLUOR	4215.2	4317.8	4266.5	4215.7	4164.4	4113.7	4212.3	4077.9	39.6	Bullish
NHPC	81.3	83.5	82.4	81.2	80.1	78.9	81.9	78.0	62.9	Bullish
NMDC	68.6	69.8	69.2	68.1	67.5	66.4	68.3	66.1	50.2	Bullish
NTPC	360.7	372.2	366.4	358.7	353.0	345.3	360.1	336.2	59.3	Bullish
NYKAA	174.6	180.4	177.5	173.7	170.8	167.0	172.4	166.2	52.5	Bullish
OBEROIRLTY	1643.1	1713.0	1678.0	1643.0	1608.1	1573.1	1644.3	1573.3	61.4	Bullish
OFSS	7866.3	8130.5	7998.4	7886.2	7754.1	7641.9	7865.0	7691.1	55.3	Bullish
OIL	386.1	397.1	391.6	386.3	380.8	375.5	389.8	373.8	57.8	Bullish
ONGC	242.2	246.2	244.2	241.4	239.4	236.7	242.1	232.1	57.7	Bullish
PAGEIND	43891.5	46339.8	45115.6	43057.8	41833.6	39775.8	42866.6	41166.1	52.6	Bullish
PATANJALI	1783.7	1808.7	1796.2	1782.2	1769.7	1755.6	1780.5	1757.5	50.4	Bullish
PAYTM	810.1	841.3	825.7	798.4	782.8	755.4	776.2	726.9	37.7	Bullish
PRESTIGE	1206.1	1234.9	1220.5	1203.7	1189.3	1172.5	1214.4	1167.0	59.8	Bullish
PGHH	12790.0	14997.5	13893.7	12999.7	11895.9	11001.8	13690.8	13530.8	51.3	Bearish
PIIND	3482.7	3586.2	3534.4	3462.2	3410.4	3338.2	3460.3	3291.7	66.4	Bullish
PIDILITIND	2866.5	2926.9	2896.7	2844.8	2814.6	2762.8	2836.5	2749.1	53.4	Bullish
PEL	993.5	1016.1	1004.8	987.7	976.4	959.2	996.5	931.3	33.1	Bullish
PETRONET	294.2	300.7	297.4	293.0	289.7	285.3	298.6	289.6	50.4	Bullish
PNB	96.4	99.9	98.1	95.0	93.3	90.2	94.4	90.4	52.3	Bullish
POLICYBZR	1647.2	1693.0	1670.1	1642.1	1619.1	1591.1	1629.7	1487.4	52.4	Bullish
POLYCAB	5216.6	5418.9	5317.7	5153.9	5052.7	4888.9	5107.5	5025.7	45.7	Bullish

NSE 200 SUPPORT & RESISTANCE

SYMBOL	CLOSE	R2	R1	PIVOT	S1	S2	5 DMA	20 DMA	% Delivery	Trend
POONAWALLA	338.6	354.1	346.3	340.7	332.9	327.3	341.9	302.9	55.7	Bullish
PFC	421.0	431.9	426.5	417.8	412.3	403.6	416.8	398.4	38.0	Bullish
PERSISTENT	5641.5	5812.1	5726.8	5583.7	5498.4	5355.3	5482.7	5313.9	44.8	Bullish
POWERGRID	295.5	302.2	298.8	293.9	290.6	285.7	290.5	271.5	70.7	Bullish
RECLTD	433.4	448.5	441.0	432.3	424.8	416.1	435.0	409.9	36.5	Bullish
RELIANCE	1278.2	1291.9	1285.0	1278.2	1271.3	1264.5	1283.0	1238.8	65.8	Bullish
SAIL	113.9	116.3	115.1	113.9	112.7	111.5	114.9	110.3	44.2	Bullish
SBICARD	870.5	881.0	875.8	869.7	864.5	858.4	862.1	846.0	51.5	Bullish
SBILIFE	1544.9	1564.7	1554.8	1542.2	1532.3	1519.8	1551.9	1461.1	67.1	Bullish
SBIN	772.3	784.8	778.6	769.5	763.3	754.2	768.6	735.3	66.3	Bullish
SHRIRAMFIN	678.5	694.6	686.5	676.4	668.3	658.2	677.5	644.7	57.6	Bullish
SIEMENS	5314.2	5491.4	5402.8	5351.4	5262.8	5211.4	5255.1	5046.0	38.8	Bullish
SONACOMS	467.4	488.0	477.7	469.8	459.5	451.7	493.9	499.1	43.1	Bearish
SHREECEM	30146.5	30892.1	30519.3	30125.2	29752.4	29358.3	29610.3	28322.5	49.0	Bullish
SRF	2946.5	3008.8	2977.6	2927.8	2896.7	2846.9	2960.3	2926.6	61.9	Bullish
SUNPHARMA	1731.5	1766.9	1749.2	1734.6	1716.9	1702.3	1764.9	1679.2	65.3	Bullish
SUNTV	665.5	696.8	681.1	657.3	641.6	617.8	652.1	594.9	35.2	Bullish
SYNGENE	719.6	733.7	726.6	718.3	711.3	703.0	718.0	687.1	46.4	Bullish
TATASTEEL	155.4	157.1	156.3	155.2	154.4	153.3	156.7	150.6	62.3	Bullish
TATACONSUM	973.6	996.7	985.1	968.8	957.2	940.9	967.1	960.2	67.8	Bullish
TATACOMM	1594.6	1627.7	1611.1	1595.7	1579.1	1563.7	1599.9	1480.3	62.1	Bullish
TCS	3651.2	3694.1	3672.6	3641.6	3620.1	3589.1	3630.4	3566.3	68.9	Bullish
TECHM	1423.9	1444.0	1433.9	1420.0	1409.9	1396.0	1432.7	1463.9	66.3	Bearish
TATAELXSI	5417.8	5648.8	5533.3	5466.7	5351.2	5284.5	5514.9	5443.1	36.4	Bearish
TIINDIA	2761.9	2848.6	2805.2	2740.9	2697.5	2633.2	2794.4	2764.2	61.7	Bearish
TORNTPOWER	1502.0	1530.6	1516.3	1493.9	1479.6	1457.2	1504.5	1375.0	50.5	Bullish
TATAPOWER	383.4	392.6	388.0	380.2	375.6	367.7	379.9	359.7	43.8	Bullish
RAMCOCEM	882.8	915.7	899.2	872.0	855.5	828.3	862.9	849.9	40.8	Bullish
TRENT	5422.3	5510.2	5466.2	5401.0	5357.1	5291.9	5226.8	5080.9	44.7	Bullish
TRIDENT	24.9	25.7	25.3	24.8	24.5	24.0	25.2	25.2	48.4	Bearish
TORNTPHARM	3233.2	3309.7	3271.4	3211.7	3173.5	3113.8	3238.4	3101.7	61.9	Bullish
TITAN	3087.7	3127.8	3107.7	3077.6	3057.6	3027.5	3088.1	3081.5	64.6	Bullish
TATACHEM	847.8	864.9	856.4	850.3	841.7	835.6	850.9	818.0	76.7	Bullish
TTML	58.4	61.6	60.0	57.8	56.2	54.0	59.8	60.0	47.6	Bearish
TATAMOTORS	668.6	684.3	676.4	668.8	660.9	653.3	700.7	663.8	41.3	Bullish
TVSMOTOR	2455.7	2519.8	2487.7	2428.9	2396.8	2337.9	2433.0	2331.6	52.0	Bullish
UBL	1976.0	2031.1	2003.5	1960.3	1932.7	1889.5	1945.5	1923.6	61.1	Bullish
UNIONBANK	124.2	129.0	126.6	123.1	120.7	117.3	123.6	117.1	58.9	Bullish
UNITDSPR	1408.1	1449.6	1428.8	1398.2	1377.4	1346.8	1383.9	1344.1	48.2	Bullish
UPL	656.4	670.5	663.5	656.7	649.7	642.9	655.8	633.1	60.5	Bullish
ULTRACEMCO	11599.6	11806.5	11703.0	11526.5	11423.1	11246.6	11290.2	10716.8	56.8	Bullish
VBL	536.3	555.4	545.9	530.4	520.9	505.4	530.1	499.4	59.0	Bullish
VEDL	472.4	482.7	477.5	469.6	464.5	456.6	467.6	443.8	53.1	Bullish
VOLTAS	1423.4	1445.4	1434.4	1424.0	1413.0	1402.7	1430.5	1415.2	56.8	Bullish
WHIRLPOOL	985.6	1015.7	1000.6	979.8	964.8	944.0	985.7	961.6	61.4	Bullish
WIPRO	272.2	275.7	274.0	271.8	270.0	267.8	268.9	274.1	35.7	Bearish
YESBANK	17.3	17.9	17.6	17.2	16.9	16.5	17.2	16.8	59.1	Bullish
ZEEL	101.7	104.5	103.1	101.5	100.1	98.6	103.3	100.7	56.2	Bullish
ZOMATO	206.3	213.5	209.9	205.1	201.5	196.8	213.9	216.8	75.1	Bearish
ZYDUSLIFE	890.8	917.7	904.2	893.0	879.5	868.3	909.6	896.8	66.1	Bearish

Disclaimer:

This report has been prepared by HDFC Securities Ltd and is solely for information of the recipient only. The report must not be used as a singular basis of any investment decision. The views herein are of a general nature and do not consider the risk appetite or the particular circumstances of an individual investor; readers are requested to take professional advice before investing. Nothing in this document should be construed as investment advice. Each recipient of this document should make such investigations as they deem necessary to arrive at an independent evaluation of an investment in securities of the companies referred to in this document (including merits and risks) and should consult their own advisors to determine merits and risks of such investment. The information and opinions contained herein have been compiled or arrived at, based upon information obtained in good faith from sources believed to be reliable. Such information has not been independently verified and no guaranty, representation of warranty, express or implied, is made as to its accuracy, completeness or correctness. All such information and opinions are subject to change without notice. Descriptions of any company or companies or their securities mentioned herein are not intended to be complete. HSL is not obliged to update this report for such changes. HSL has the right to make changes and modifications at any time.

This report is not directed to, or intended for display, downloading, printing, reproducing or for distribution to or use by, any person or entity who is a citizen or resident or located in any locality, state, country or other jurisdiction where such distribution, publication, reproduction, availability or use would be contrary to law or regulation or what would subject HSL or its affiliates to any registration or licensing requirement within such jurisdiction.

If this report is inadvertently sent or has reached any person in such country, especially, United States of America, the same should be ignored and brought to the attention of the sender. This document may not be reproduced, distributed or published in whole or in part, directly or indirectly, for any purposes or in any manner.

Foreign currencies denominated securities, wherever mentioned, are subject to exchange rate fluctuations, which could have an adverse effect on their value or price, or the income derived from them. In addition, investors in securities such as ADRs, the values of which are influenced by foreign currencies effectively assume currency risk. It should not be considered to be taken as an offer to sell or a solicitation to buy any security.

This document is not, and should not, be construed as an offer or solicitation of an offer, to buy or sell any securities or other financial instruments. This report should not be construed as an invitation or solicitation to do business with HSL. HSL may from time to time solicit from, or perform broking, or other services for, any company mentioned in this mail and/or its attachments.

HSL and its affiliated company(ies), their directors and employees may; (a) from time to time, have a long or short position in, and buy or sell the securities of the company(ies) mentioned herein or (b) be engaged in any other transaction involving such securities and earn brokerage or other compensation or act as a market maker in the financial instruments of the company(ies) discussed herein or act as an advisor or lender/borrower to such company(ies) or may have any other potential conflict of interests with respect to any recommendation and other related information and opinions.

HSL, its directors, analysts or employees do not take any responsibility, financial or otherwise, of the losses or the damages sustained due to the investments made or any action taken on basis of this report, including but not restricted to, fluctuation in the prices of shares and bonds, changes in the currency rates, diminution in the NAVs, reduction in the dividend or income, etc.

HSL and other group companies, its directors, associates, employees may have various positions in any of the stocks, securities and financial instruments dealt in the report, or may make sell or purchase or other deals in these securities from time to time or may deal in other securities of the companies / organizations described in this report. As regards the associates of HSL please refer the website.

HSL or its associates might have managed or co-managed public offering of securities for the subject company or might have been mandated by the subject company for any other assignment in the past twelve months.

HSL or its associates might have received any compensation from the companies mentioned in the report during the period preceding twelve months from the date of this report for services in respect of managing or co-managing public offerings, corporate finance, investment banking or merchant banking, brokerage services or other advisory service in a merger or specific transaction in the normal course of business.

HSL or its analysts did not receive any compensation or other benefits from the companies mentioned in the report or third party in connection with preparation of the research report. Accordingly, neither HSL nor Research Analysts have any material conflict of interest at the time of publication of this report. Compensation of our Research Analysts is not based on any specific merchant banking, investment banking or brokerage service transactions. HSL may have issued other reports that are inconsistent with and reach different conclusion from the information presented in this report.

Research entity has not been engaged in market making activity for the subject company. Research analyst has not served as an officer, director or employee of the subject company. We have not received any compensation/benefits from the subject company or third party in connection with the Research Report.

Please note that HDFC Securities has a proprietary trading desk. This desk maintains an arm's length distance with the Research team and all its activities are segregated from Research activities. The proprietary desk operates independently, potentially leading to investment decisions that may deviate from research views.

HDFC securities Limited, I Think Techno Campus, Building - B, "Alpha", Office Floor 8, Near Kanjurmarg Station, Opp. Crompton Greaves, Kanjurmarg (East), Mumbai 400 042 Phone: (022) 3075 3400 Fax: (022) 2496 5066

Compliance Officer: Murli V Karkera Email: complianceofficer@hdfcsec.com Phone: (022) 3045 3600

For grievance redressal contact Customer Care Team Email: customer-care@hdfcsec.com Phone: (022) 3901 9400

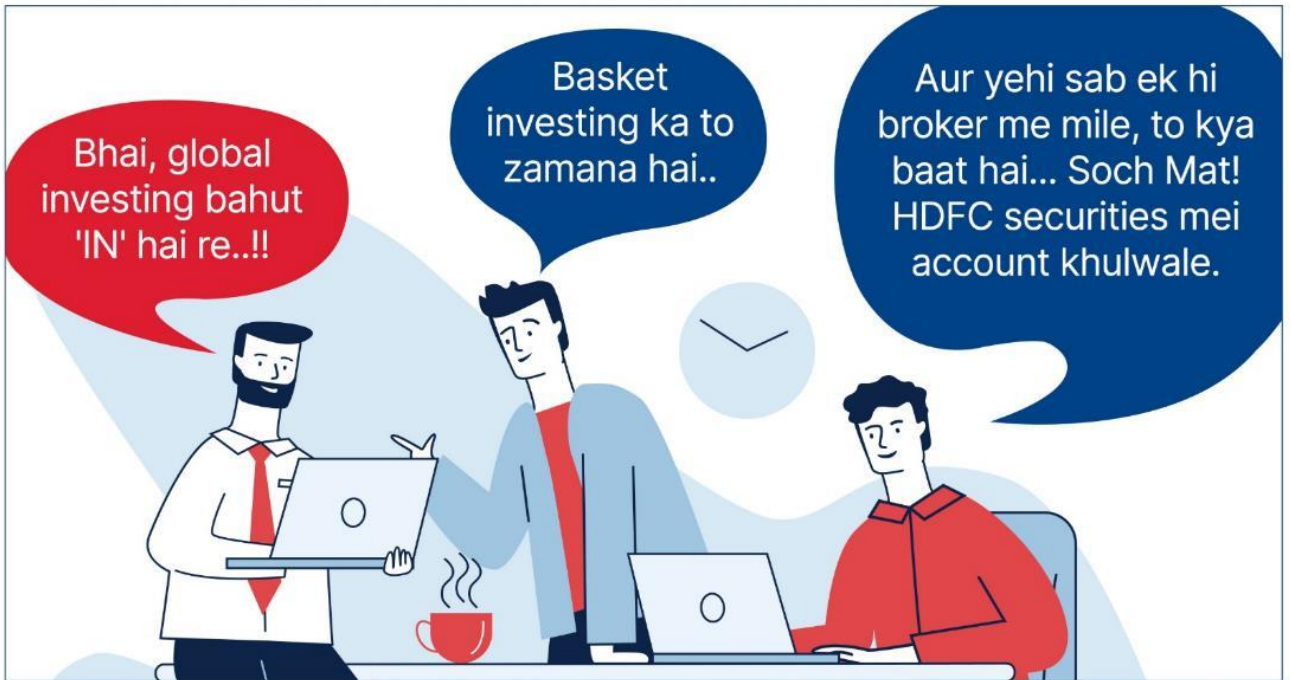
HDFC Securities Limited, SEBI Reg. No.: NSE, BSE, MSEI, MCX: INZ000186937; AMFI Reg. No. ARN: 13549; PFRDA Reg. No. POP: 11092018; IRDA Corporate Agent License No.: CA0062; SEBI Research Analyst Reg. No.: INH000002475; SEBI Investment Adviser Reg. No.: INA000011538; CIN - U67120MH2000PLC152193

Investment in securities market are subject to market risks. Read all the related documents carefully before investing.

Mutual Funds Investments are subject to market risk. Please read the offer and scheme related documents carefully before investing.

Registration granted by SEBI, membership of BASL (in case of IAs) and certification from NISM in no way guarantee performance of the intermediary or provide any assurance of returns to investors.

#HDFCsecMythBusters



**Scan the code to
download our mobile app now!**

Global Investing, Basket Investing are not a Exchange traded product and all disputes related to the distribution activity of Global Investing and Basket Investing will not have access to Exchange investor redressal forum or Arbitration mechanism. Involvement of HDFC securities is restricted to Referral only. HDFC securities does not offer this product directly to customers <https://www.hdfcsec.com/globalinvesting>. Account would be opened after all procedure relating to IPV and client due diligence is completed. Investment in securities market are subject to market risks, read all the related documents carefully before investing. SEBI registration & disclaimers: <https://www.hdfcsec.com/article/disclaimer-1795>.
The information is only for consumption by the client and such material should not be redistributed.

Thank You!